



## **StoRender Heritage** Traditional render systems

# Building traditions

At Sto, we trace our origins to 1835. Since that time we have built up a vast knowledge of construction materials used throughout the centuries.

Internationally recognised as market leaders in our core businesses, we wish to offer our customers the most comprehensive range of building systems available. It is for this reason that Sto is introducing a range of new render systems based upon traditional render technologies in the UK and Ireland.

For Sto customers seeking an authentic, traditional aesthetic, they are now able to specify the highest quality mineralic systems available.



# StoRend Heritage

The StoRend Heritage range of systems offers authentic, traditional aesthetic finishes combined with high quality materials for modern building practices and standards.

For over 50 years Sto has set the benchmark for render performance. We strive to meet the needs of our customers through research, innovation and environmentally friendly manufacturing processes.

## Rethinking innovation

Innovation is not always about new technology. We have applied our knowledge to traditional render to create the StoRend Heritage range of traditional thick coat render systems.

## Protection

Sand, cement and lime renders were originally used in colder climates to protect exposed walls from moisture penetration and frost damage. Thick coat renders also provide an effective barrier against every day knocks and scrapes from human traffic.

## Working smart

Most StoRend Heritage renders can be spray applied to increase application efficiency. Spray application is significantly faster than traditional methods of application with less waste material and site disruption. Combined, significant cost benefits can be realised.

## Quality control

Routine testing and checking of materials ensure consistent performance of all StoRend Heritage products and systems.

Each system in the StoRend Heritage range has been designed for specific substrate requirements. A range of texture and colour choices are available to you depending on aesthetic preference or local planning regulations.

The systems provide all of the benefits traditionally associated with mineralic renders, such as high performance weather protection and aesthetic appeal.

In addition, we have improved upon the standard render mixes to provide a range of improved performance characteristics:

## Improved durability






StoRend Heritage systems incorporate carefully graded sands/fillers and are polymer modified for better adhesion, durability and improved crack resistance compared to traditional lime or sand-and-cement render mixes.

## Improved crack resistance

Fibre reinforcement significantly improves the impact strength of the render in addition to minimising shrinkage when used in accordance with Sto technical specifications, helping to reduce unwanted surface cracks. Such properties are ideal for social housing projects.



## System Selector

		Systems				
						
		StoRend Heritage N1	StoRend Heritage N2	StoRend Heritage R1	StoRend Heritage R2	StoRend Heritage R3
Finish	Smooth	●	○	●	●	○
	Smooth / Overpainted	●	○	●	●	○
	Scratch	○	●	●	●	○
	Wet Dash	●	○	●	●	○
	Dry Dash	●	○	●	●	●
Substrate	Unpainted brick / blockwork	●	●	○	○	○
	Painted brick / blockwork	○	○	○	●	○
	Friable brick / blockwork <sup>1</sup>	○	○	●	○	○
	Unpainted render	○	○	●	○	●
	Painted render	○	○	●	●	○
	Friable render <sup>1</sup>	○	○	●	○	○
	Metal <sup>2</sup>	○	○	○	○	○
	Timber <sup>2</sup>	○	○	○	○	○
Render carrier board <sup>2</sup>	○	○	○	○	○	

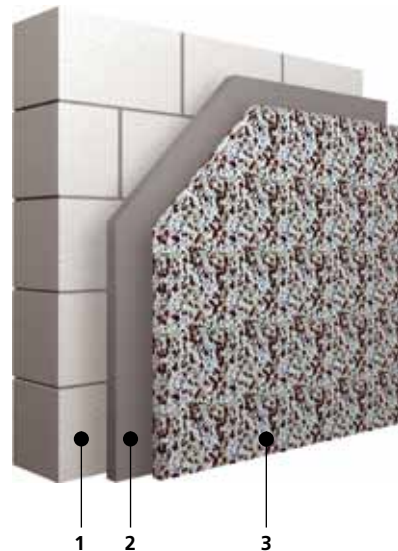
<sup>1</sup> Friable substrates must be structurally stable

Key: ● Suitable ○ Unsuitable

<sup>2</sup> StoRend Heritage systems are unsuitable for application onto metal, timber and render carrier board. For projects requiring render carrier boards, please contact Sto for information on our thin coat render systems.

# New build

## StoRend Heritage N1 2-3 coat new build system



Traditionally, thick coat sand-and-cement renders have been used to protect brick and blockwork exposed to harsh weather conditions in areas of high exposure. Sto has introduced a new range of systems for New Build projects that either require a traditional finish due to planning regulations, or for projects where cost constraints are a major contributing factor.

The StoRend Heritage range of systems for new build projects are all designed to be applied to new, unpainted brick and blockwork. All of the benefits associated with StoRend Heritage systems are present.

There are two main systems for consideration, depending on need and required finish.

**StoRend Heritage systems are not suitable for application onto metal, timber or carrier board substrates.**

A two/three coat system for new build brick and blockwork projects. Available in Smooth, Wet Dash or Dry Dash finishes.

### System: StoRend Heritage N1

#### 1. Substrate: Brick/blockwork

#### 2. Levelling Coat: StoMiral Cote

#### 3. Top Coat options (see page 11)

##### StoMiral Nivell Plus

Smooth finish available in 10 standard colours.

##### StoMiral Nivell Plus with StoMiral Wet Dash and Sto-Spar Dash Aggregate

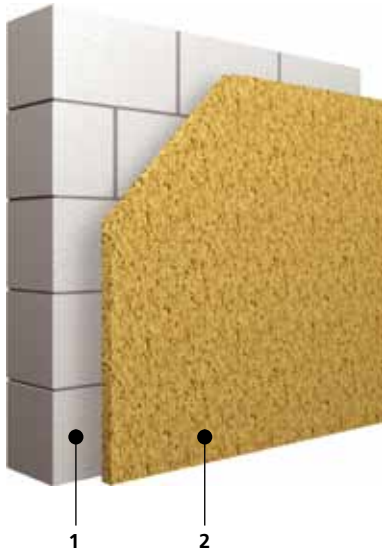
StoMiral Wet dash incorporating 50% selected Sto-Spar Dash aggregates, overpainted in a choice of 10 colours with StoColor Jumbosil or StoLotusan Color.

##### StoMiral Dry Dash with Sto-Spar Dash aggregate

Sto-Spar Dash available in 10 coloured aggregate combinations.

# StoRend Heritage N2

1-coat new build system



A one-coat system for new build brick and blockwork projects. Available in a Scratch finish in a range of 10 colours.

StoMiral Scratch can be finished with a variety of textures. Stone, ashlar and other effects can be achieved by scraping and cutting into the surface to form joints and grooves.

## System: StoRend Heritage N2

1. Substrate: Brick/blockwork

2. Top Coat options (see page 11)

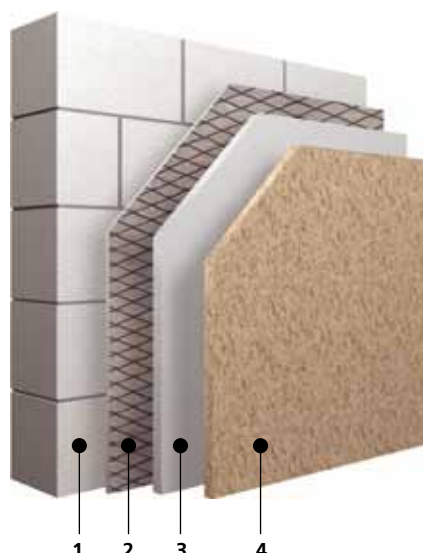
StoMiral Scratch

Scratch finish available in 10 standard colours.



# Refurbishment

## StoRend Heritage R1 For unsound substrates



For regions where the weather conditions have traditionally necessitated the use of rendered facades, Sto has developed a range of authentic heritage systems appropriate for refurbishment requirements. The choices of finishes are in keeping with those that would be available traditionally, with the added benefit of adhering to current product testing.

The StoRend Heritage range of systems for refurbishment projects is designed to adhere to a number of different substrates. All of the system benefits associated with StoRend Heritage are present.

There are three main systems for consideration, depending on substrate and required finish.

**StoRend Heritage systems are not suitable for application onto metal, timber or carrier board substrates.**

A two/three coat refurbishment system with stainless steel lath and mechanical fixings, allowing for significantly improved adhesion to structurally sound, friable masonry or rendered substrates.

StoRend Heritage R1 can be finished in Smooth, Dry Dash, Wet Dash or Scratch finishes.

### System: StoRend Heritage R1

- 1. Substrate: Loose / Friable**
- 2. Reinforcement: Stainless steel lath**
- 3. Levelling coat: StoMiral Cote**
- 4. Top Coat options (see page 11)**

#### StoMiral Nivell Plus

Smooth finish available in a choice of 10 standard colours.

#### StoMiral Scratch

Scratch finish available in 10 standard colours.

#### StoMiral Nivell Plus with StoMiral Wet Dash and Sto-Spar Dash Aggregate

StoMiral Wet dash incorporating 50% selected Sto-Spar Dash aggregates, overpainted in a choice of 10 colours with StoColor Jumbosil or StoLotusan Color.

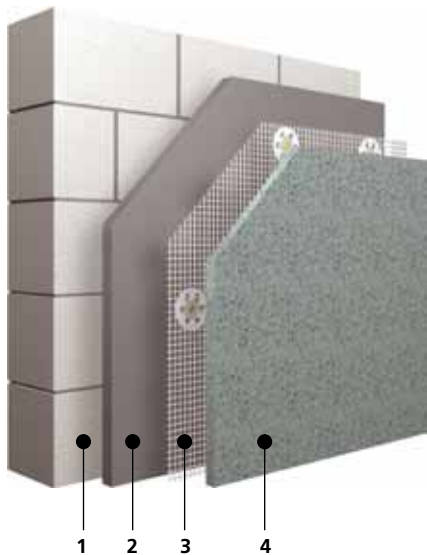
#### StoMiral Dry Dash with Sto-Spar Dash aggregate

Sto-Spar Dash available in 10 coloured aggregate combinations.



## StoRend Heritage R2

For painted substrates



A two/three coat refurbishment system designed to adhere to painted substrates. Sto-Glass Fibre Mesh improves impact resistance and significantly reduces the risk of cracking.

The system can be finished in Smooth, Dry Dash, Wet Dash or Scratch finishes.

### System: StoRend Heritage R2

1. **Substrate:** Painted blockwork / render
2. **Levelling coat:** StoMiral Contact
3. **Reinforcement:** Sto-Glass Fibre Mesh + fixings
4. **Top Coat options (see page 11)**

#### StoMiral Nivell Plus

Smooth finish available in a choice of 10 standard colours.

#### StoMiral Scratch

Scratch finish available in 10 standard colours.

#### StoMiral Nivell Plus with StoMiral Wet Dash and Sto-Spar Dash Aggregate

StoMiral Wet dash incorporating 50% selected Sto-Spar Dash aggregates, overpainted in a choice of 10 colours with StoColor Jumbosil or StoLotusan Color.

#### StoMiral Dry Dash with Sto-Spar Dash aggregate

Sto-Spar Dash available in 10 coloured aggregate combinations.

## StoRend Heritage R3

For unpainted render



A refurbishment system available in a Dry Dash finish.

StoRend Heritage R3 should only be used on existing sound, unpainted render.

### System: StoRend Heritage R3

1. **Substrate:** Unpainted render
2. **Primer:** StoPrim Micro
3. **Top Coat options (see page 11)**

#### StoMiral Dry Dash with Sto-Spar Dash aggregate

Sto-Spar Dash available in 10 coloured aggregate combinations.

# Finishes

The choice of finish will depend on anticipated levels of exposure to the elements. Such conditions vary depending on the location of the building and the surrounding environment.

When applying the various layers of materials within each system, the anticipated levels of exposure need careful consideration. In accordance with industry guidance, we would recommend no less than a total thickness of 20mm in severely exposed areas for StoRend Heritage systems.

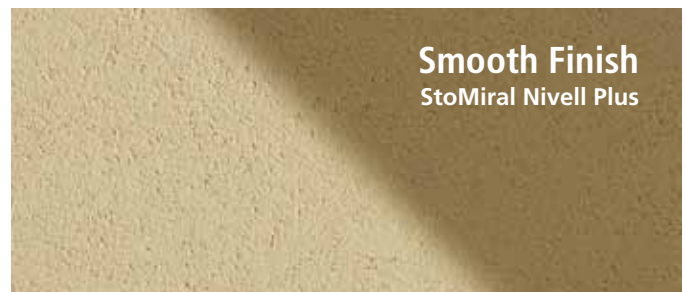
When specifying StoRend Heritage systems, it is imperative that the detailing is suitable for the conditions and that the correct mixes of aggregates are used. Failure to do so could result in system failures due to moisture penetration. Fortunately, all StoRend Heritage products come premixed to avoid batching errors.

The StoRend Heritage range of finishes is more than adequate for temperate climates. However, in areas of heavy rainfall, we would recommend a finish with a rougher texture, such as a Dry Dash. A rough surface breaks up the flow of running water and avoids any concentration of moisture in one problem area, minimising the risk of moisture penetration and subsequent damage.

Designers should account for the site exposure conditions in accordance with BS EN 13914-1:2005 and BS 8104:1992 and ensure the wall construction and detailing is suitable for the given exposure. Sto can advise on suitable rendering solutions to match construction types.

## Overpainting

StoColor Jumbosil and StoLotusan Color are masonry paints ideally suited for overpainting mineralic render. Both paints have a traditional colour reference number to match the underlying render (Smooth, Scratch and Wet Dash finishes only).



## Colour range | StoMiral Nivell Plus, StoMiral Scratch, StoMiral Dry Dash, StoMiral Wet Dash



Natural White



Old English  
31416



Parchment Yellow  
31411



Cream  
32336



Mushroom  
32436



Pink  
33114



Spanish Peach  
31421



European Grey  
35236



Arctic Blue  
35336



Mint Green  
36312

## Colour range | Sto-Spar Dash aggregate



Classic



Harvest



Beige Marble



Yellow



Polar Red & White



Polar White



Ashton Cream



Nordic



Polar Champagne



Polar Black

## Finish Selector

	Weather Conditions			
	Sheltered	Moderate	Severe	Very Severe
Smooth	●●	●	●	○
Smooth / Overpainted	●●	●●	●	○
Scratch	●●	●●	●	○
Wet Dash	●●	●●	●●	●●
Dry Dash	●●	●●	●●	●●

Key: ●● Ideal ● Adequate ○ Not recommended

**Head Office**

**Sto Ltd.**

2 Gordon Avenue  
Hillington Park  
Glasgow G52 4TG

Tel +44 (0)141 892 8000

Fax +44 (0)141 404 9001

info.uk@sto.com

www.sto.co.uk

Southern Office & Distribution Centre

**Sto Ltd.**

Antura  
Kingsland Business Park  
Wade Road  
Basingstoke RG24 8EN

Tel +44 (0)1256 332770

Fax +44 (0)1256 810887

Midlands Training & Distribution Centre

**Sto Ltd.**

Unit 700  
Catesby Park  
Kings Norton  
Birmingham B38 8SE

Tel +44 (0)121 459 5149

Fax +44 (0)121 459 0632